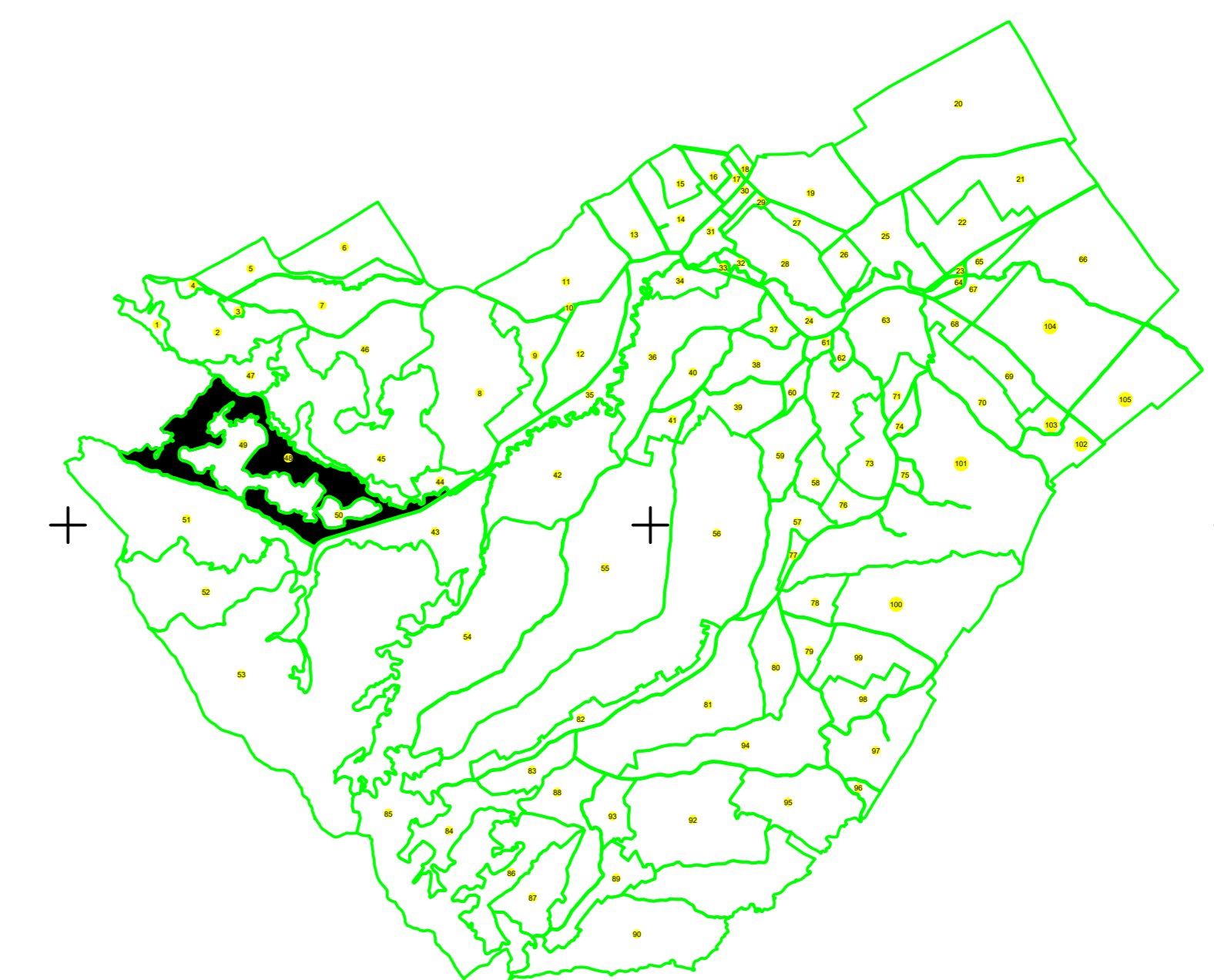
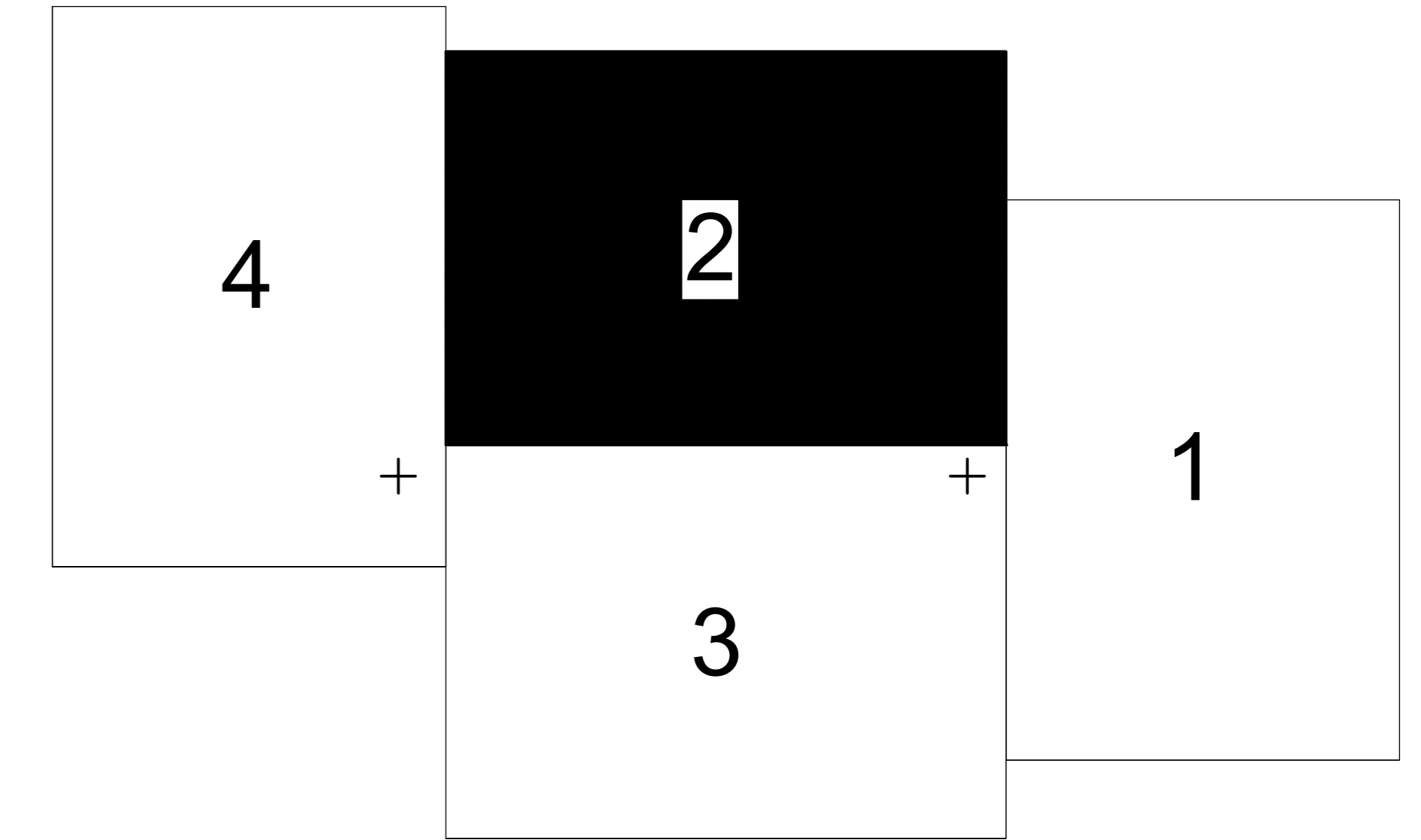
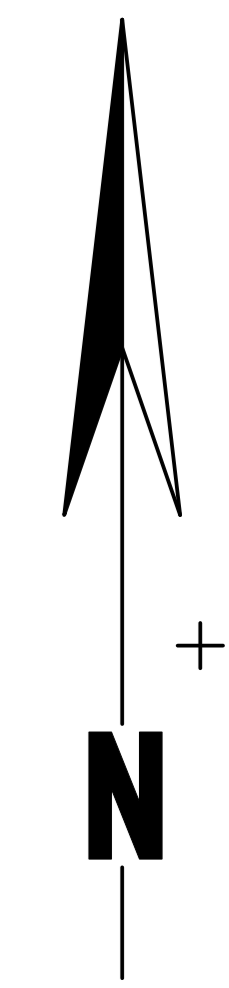


**PLAN CADASTRAL**  
UAT: Cândești, județul: NEAMȚ, Sect. cad. 48, planșa 2  
+ Scara 1:1000 +  
Sistem de proiecție: stereografic 1970  
Copie Spre Publicare



LEGENDA

|                    |     |
|--------------------|-----|
| Numar sectoi       | ●   |
| Cod constructie    | C1  |
| ID imobil          | 15  |
| Limita sectoi      | —   |
| Limita imobil      | —   |
| Hidrografie        | —   |
| Limita UAT         | —   |
| Limita intravilan  | —   |
| Limita tarla       | —   |
| Numar tarla        | 101 |
| Numar postal       | 378 |
| Limita constructie | —   |

Executant: SC TOTAL BUSINESS LAND SRL  
Data: FEBRUARIE, 2023

